

CMS Mobile Viewer

User`s Manual



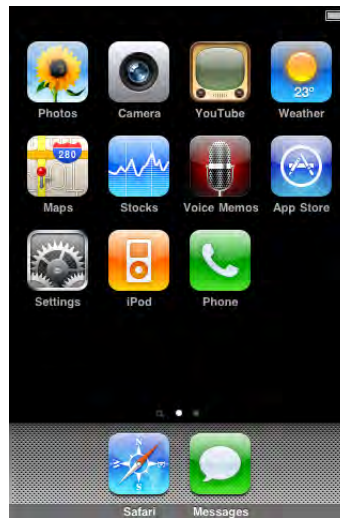
1. CMS MOBILE VIEWER

1.1 iPhone Mobile

1.1.1 System Requirements

- There are no other requirements to run this program because it is specialized to perform on iPhone interface.

1.1.2 Installation




- Turn on the iPhone then connect to App Store.



- Move to search menu and type “mviewer” then click “Search”.

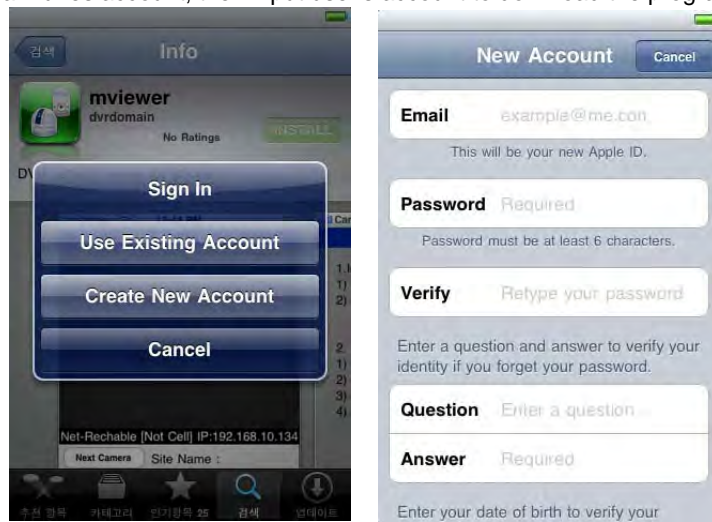


- Select “” program which is offered from dvrdomain by free.

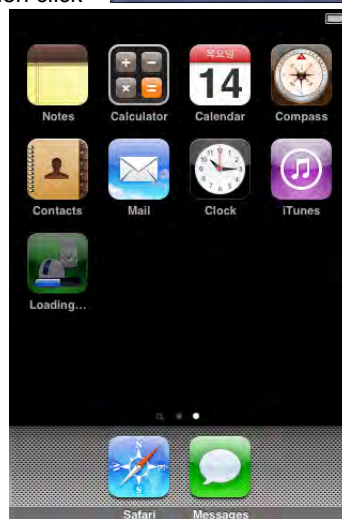
- When user clicks a “**FREE**” button, it will be turned to “**INSTALL**”
- Click “**INSTALL**” to start installation.



- If user already has a iTunes account, then input user's account to download the program.




- If user does not have the account, then click “**Create New Account**” and it is registered by free.




- When user registered the account, the program will be automatically installed.


1.1.3 Site Registration

- Click “” icon on iPhone menu then below will show.





- Move to “” and enter site information which are same as CMS site registration.




- Enter Site Name, IP or DDNS address.
- Enter Admin/Stream port value.
- Enter ID/Password.
- Click “” to save the setting.

1.1.4 Connection

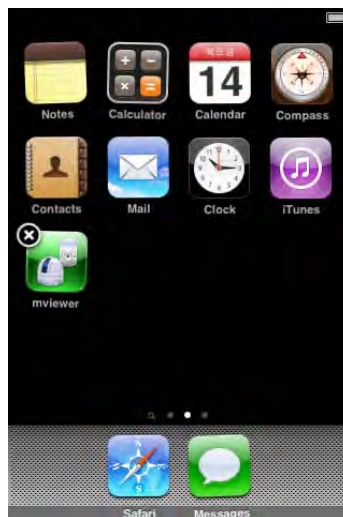



- On “  ” window, click one of the registered site and click “  ”.

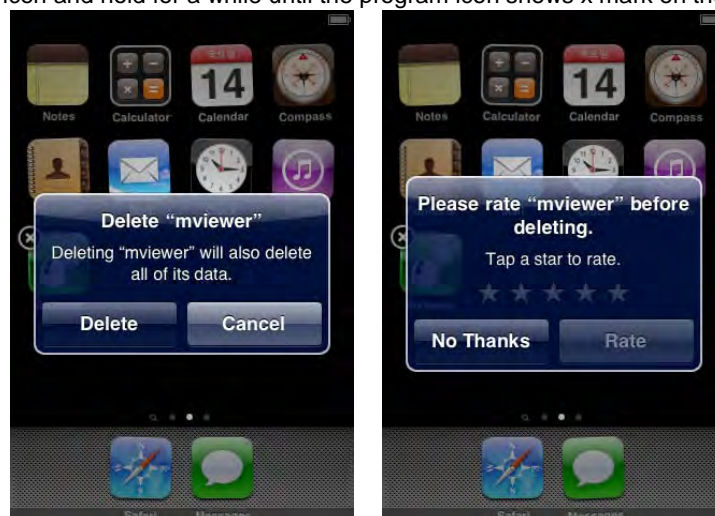




- To Select other channels, click the channel bar below the Site Name.
- If user wishes to change the channel among 9~16, then click “  ”.

1.1.5 Uninstall



- Click the “  ” icon and hold for a while until the program icon shows x mark on the top-left side.



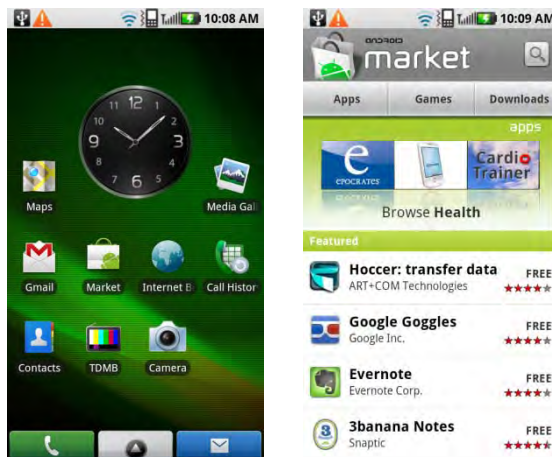
- Click the “  ” icon then it will ask to delete the program.
- Click “  ” button to successfully uninstall the program.

1.2 Android Phone

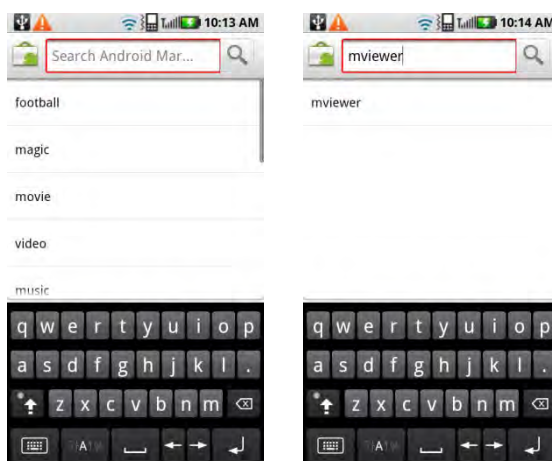
1.2.1 System Requirements


- This Program is designed and applied only for Android OS based Smart phones.

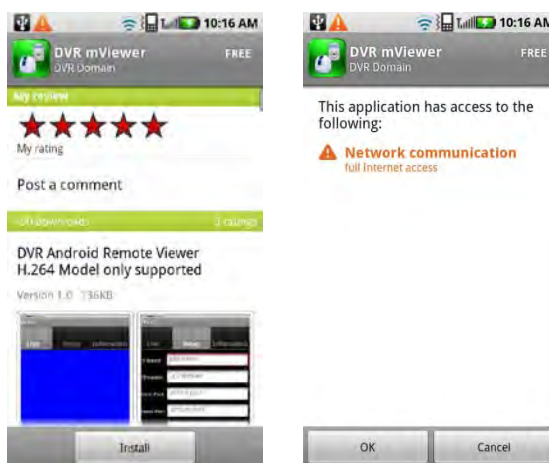
1.2.2 Installation



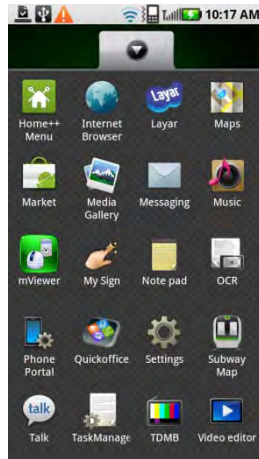
- Turn on the phone then connect to Android Market.



- Move to search menu and type “mviewer” then select “” program which is offered from dvrdomain by free.




- Click “” then “” to start installation.




- The program will be automatically installed in user's application menu.

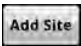
1.2.3 Site Registration

- Click “” icon on application menu then below will show.

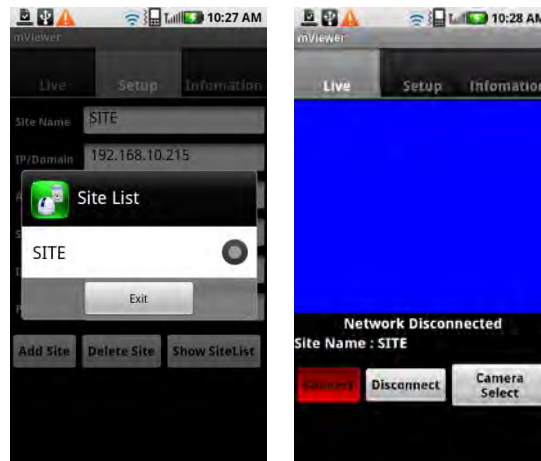


- Move to “” tab and enter site information which are same as CMS site registration.



- Enter Site Name, IP or DDNS address.
- Enter Admin/Stream port value.
- Enter ID/Password.
- Click “” to save the setting.

1.2.4 Connection



- Click “ **Show SiteList** ” icon and select one of the registered site and click “ **Exit** ”.
- Move to “ **Live** ” tab and click “ **Connect** ” icon.




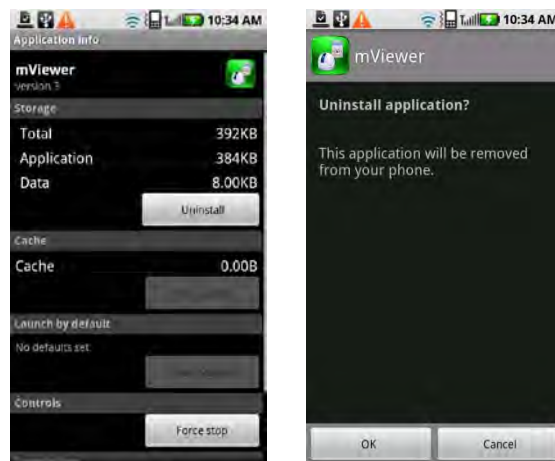
- To select other channels, click the “ **Camera Select** ” icon below the Site Name.




- When disconnecting, please click “ **Disconnect** ” and exit the mobile viewer program.

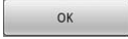
1.2.5 Uninstall

- Move to Setup > Application > Manage Applications then select “”.



- Click “” icon then it will ask to delete the program.



- Click “” button to successfully uninstall the program.

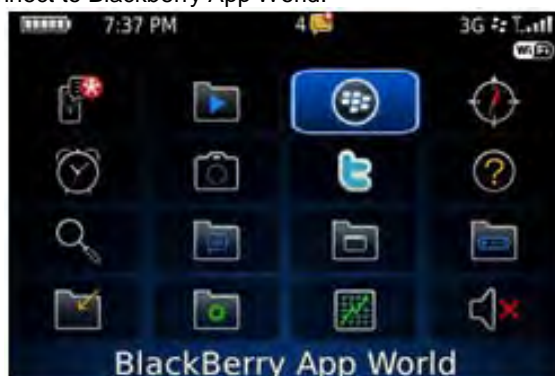
1.3 Blackberry Mobile

1.3.1 System Requirements

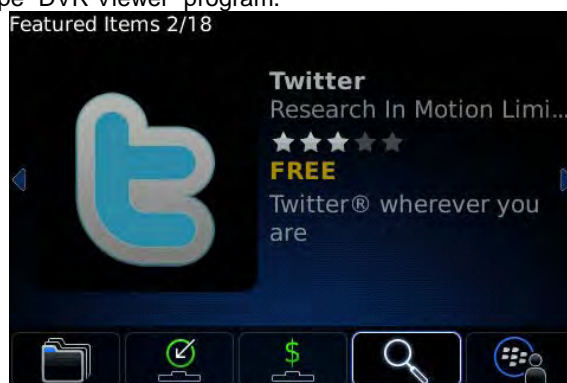
- This Program is designed and applied only for RIM Blackberry OS based Smart Phones.

1.3.2 Installation

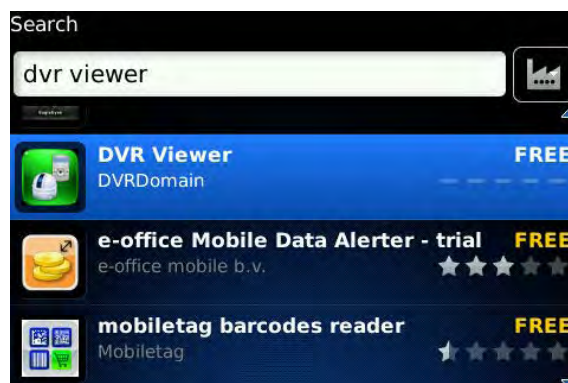
- Turn on the phone and connect to Blackberry App World.




- Click “search” icon and type “DVR Viewer” program.

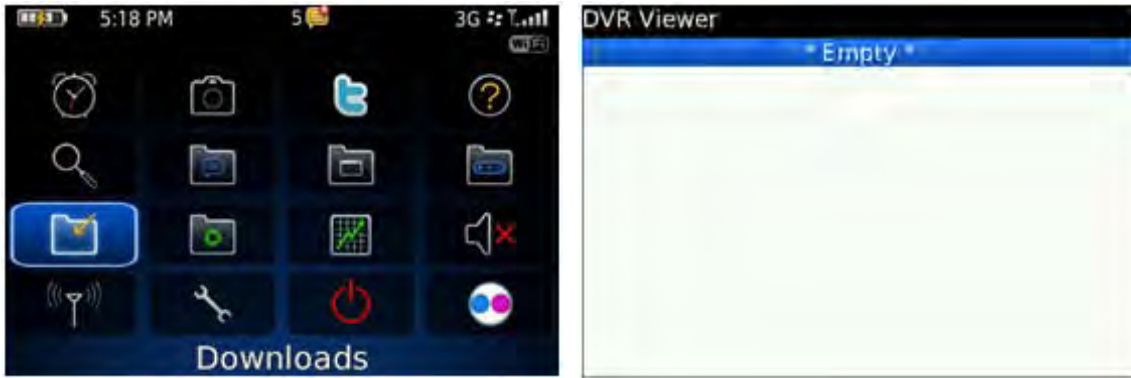


- Select the “DVR viewer” which is offered from dvrdomain by free and start to install the program by clicking the icon.



1.3.3 Site Registration

- After downloading the program, click “” icon in the download folder or applications folder and the following screen will be shown.



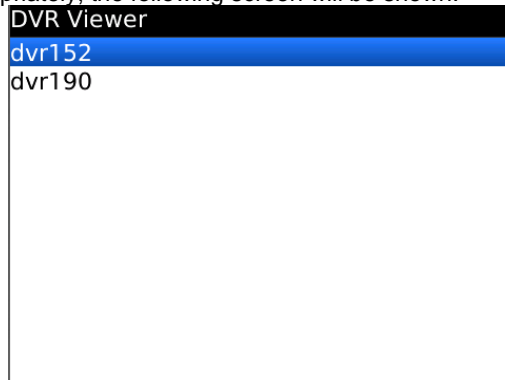
- Click “menu>New” to type the same site information with CMS site registration.



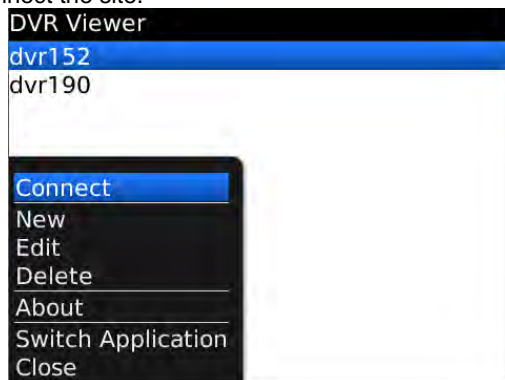
- Enter Site Name and IP/Domain.
- Enter Admin and Stream port.
- Enter ID and Password.
- Click “Add” to save the setting.

1.3.4 Connection

- If the site is registered appropriately, the following screen will be shown.



- Click “Menu>Connect” to connect the site.

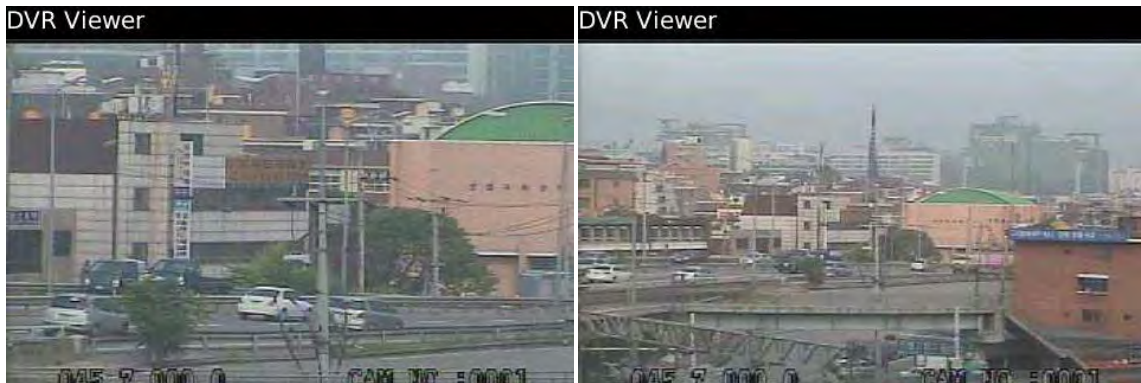


- If users want to change the channels, click “Menu” to select another camera.



1.3.5 PTZ control

- Users can control PTZ by blackberry phone.
- Press volume up button on the right side of the phone to zoom in.
- Press volume down button to zoom out.



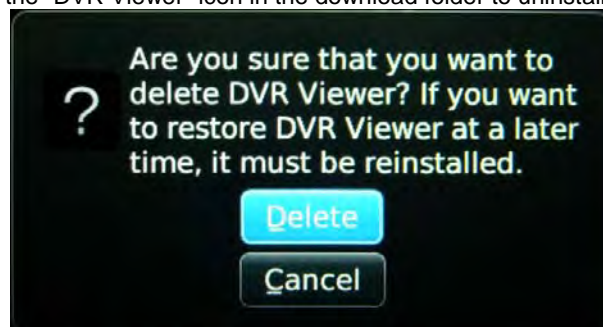
- Press number pad to change directions.
- For example, click no. 4 to move left and no.6 to move right.



- In the same way, click no.2 to move upside and no.8 to move downside.
- When disconnecting, please click “Menu>Disconnect” and exit the mobile viewer program.

1.3.6 Uninstall

- Click “Menu>Delete” on the “DVR Viewer” icon in the download folder to uninstall the program.



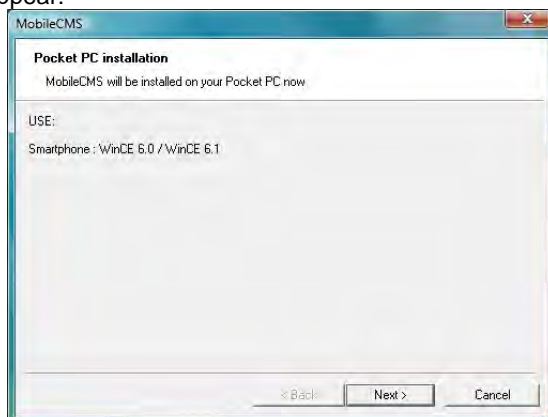
1.4 Windows Mobile

1.4.1 System Requirements

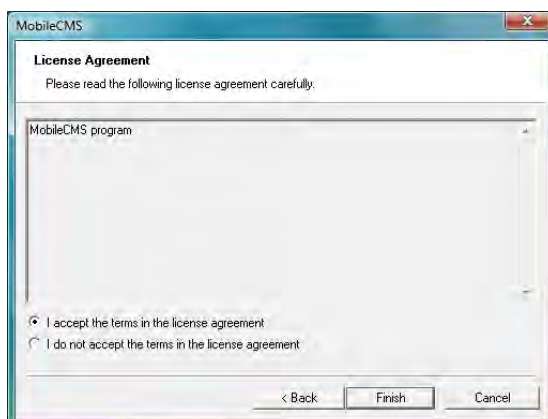
- OS : Windows Mobile Professional 6.1 or higher version.
- Memory : 512Kb or Higher.
- Device : Smartphone
- Network : Available all wireless networking method. I.e. Wi-fi, HSDPA, Wibro.

1.4.2 Installation

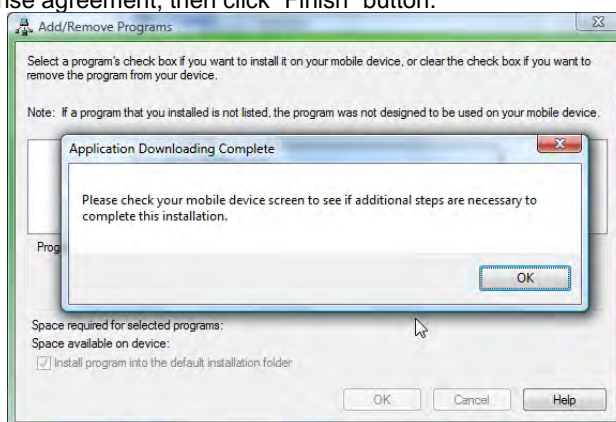
- Prepare ActiveSync program to user's PC.
 - Available download at following link.
 - <http://www.microsoft.com/downloads/details.aspx?FamilyID=9e641c34-6f7f-404d-a04b-dc09f8141141&DisplayLang=en>
 - ActiveSync enable users manage documents, calendars, contact lists and email between their PC and mobile device through a Cradle or a USB connection.
- Connect mobile device to PC then double click "Setup_MobileCOM.exe" to start installation.
- The following screen will appear:



- Click "Next" button.



- Click accepting the license agreement, then click "Finish" button.



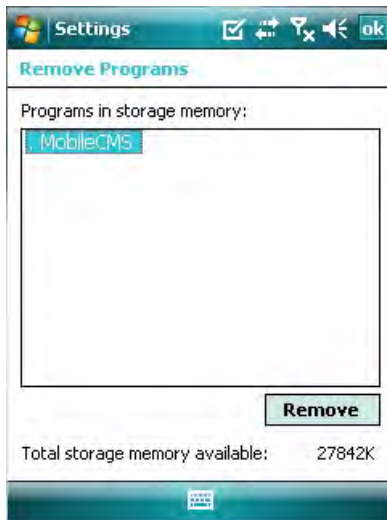
- Installation box will appear.
- Click [OK] to start installation.
- When installation completed, following pop-up will appear.
- Click [OK].
- If following message appeared, it has successfully installed.



(NOTE)

Depending on mobile device, successful installation message may not appear. Click [OK] when license agreement message appear.

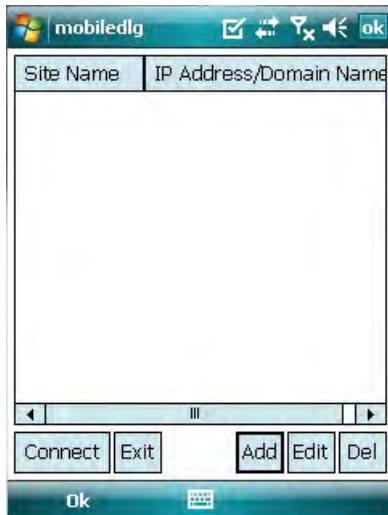
- Move to [Programs] page to check whether CMS has installed.



1.4.3 Site Configuration

Add

- Click [Add] to appear following screen.



- Fill in correct information.
 - Site Name : Insert the name of site.
 - IP/Domain : Insert the IP address or Domain name of the site.
 - ID : Input the registered ID of the site.
 - Password : Input the password of the registered ID.
 - Command Port : Insert Command Port of the site.
 - Stream Port : Insert Stream Port of the site.
- Click [Save] then following screen will appear with registered site.

Edit

- Select a site and click [Edit] then following screen will appear.

The screenshot shows a mobile application window titled 'mobiledlg'. It contains a form with the following fields and values:

Site Name	office
IP/Domain	192.168.10.135
ID	admin
Password	****
Command Port	5920
Stream Port	5921

At the bottom of the dialog, there are two buttons: 'Save' and 'Cancel'.

- Correct items then click [Save].

Delete

- Select a site and click [Del].
- Confirmation message will pop up.

The screenshot shows the 'mobiledlg' application with a confirmation dialog box overlaid. The dialog box is titled 'MobileCMS' and contains the text 'Are you sure to delete?' with a question mark icon. Below the text are two buttons: 'Yes' and 'No'.

In the background, a table is visible with the following data:

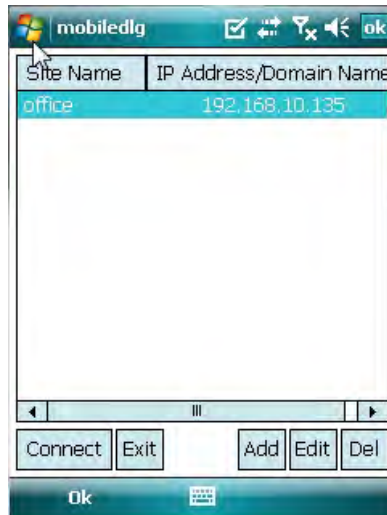
Site Name	IP Address/Domain Name
office	192.168.10.135

At the bottom of the application window, there are buttons for 'Connect', 'Exit', 'Add', 'Edit', and 'Del'. The 'Del' button is highlighted, indicating it was the one clicked to trigger the dialog.

- Click [Yes] then the site information will be removed.

1.4.4 Connection

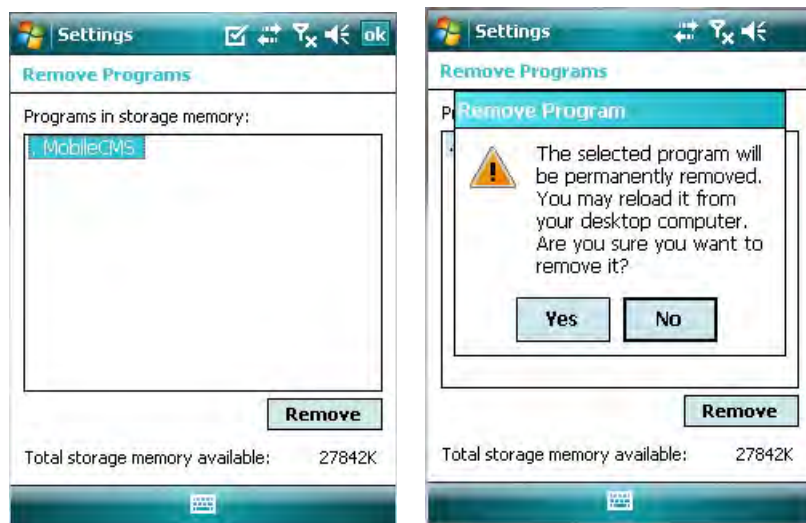
- Select a site then click [Connect].



- Live display screen of the site will appear if it is successfully connected.
- Users are able to select a camera by clicking camera button.
- Click [Disconnect] then, live display screen will be closed and Site list box will appear.

1.4.5 Uninstall

- Move to [Program Menu> System] then click [Remove Programs].
- The currently installed list will show up.



- Choose Mobile CMS on the list and click [Remove].
- Confirmation message will pop up.
- Click [Yes] to complete uninstall then program will be removed.