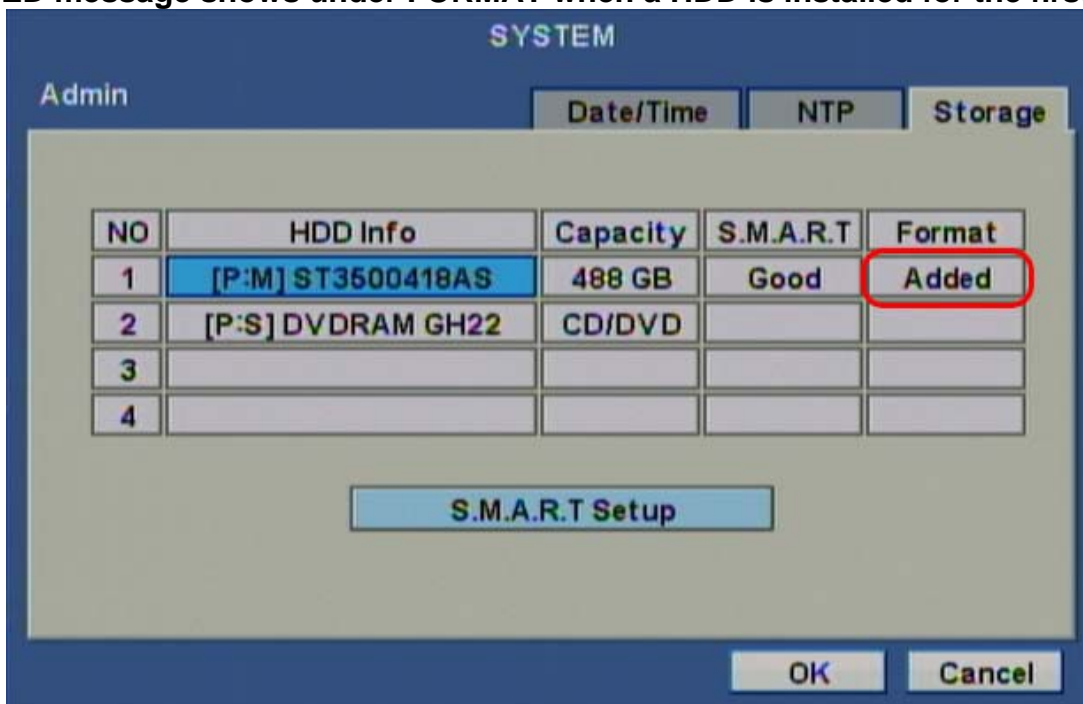


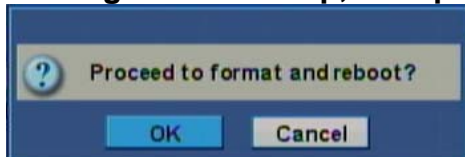
After adding a new HDD, a message shows when the DVR boots up



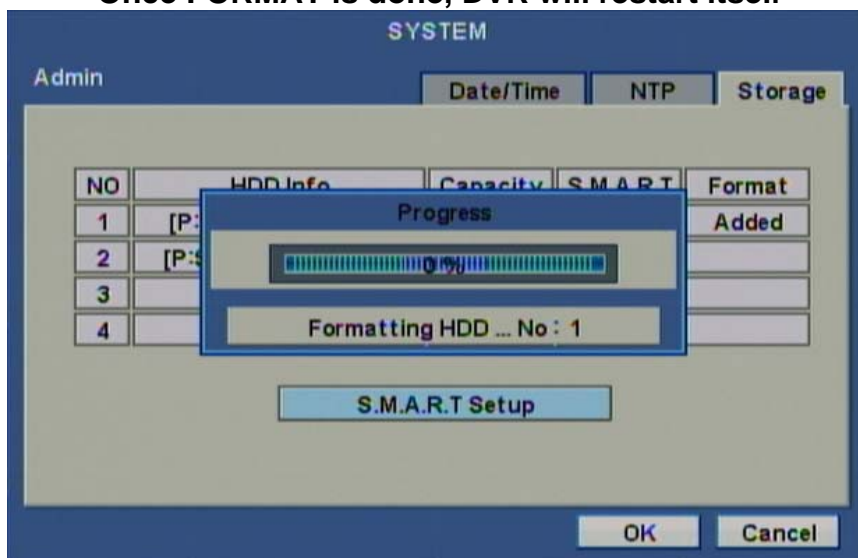
Login to SETUP Menu, then SYSTEM -> ADMIN -> STORAGE ADDED message shows under FORMAT when a HDD is installed for the first time



Click on ADDED and a message will show up, then press OK to begin format



Once FORMAT is done, DVR will restart itself



To check if the HDD was added sucesfully go back to

SETUP Menu -> SYSTEM -> ADMIN -> STORAGE
This time you should see "..." instead "Added"

